

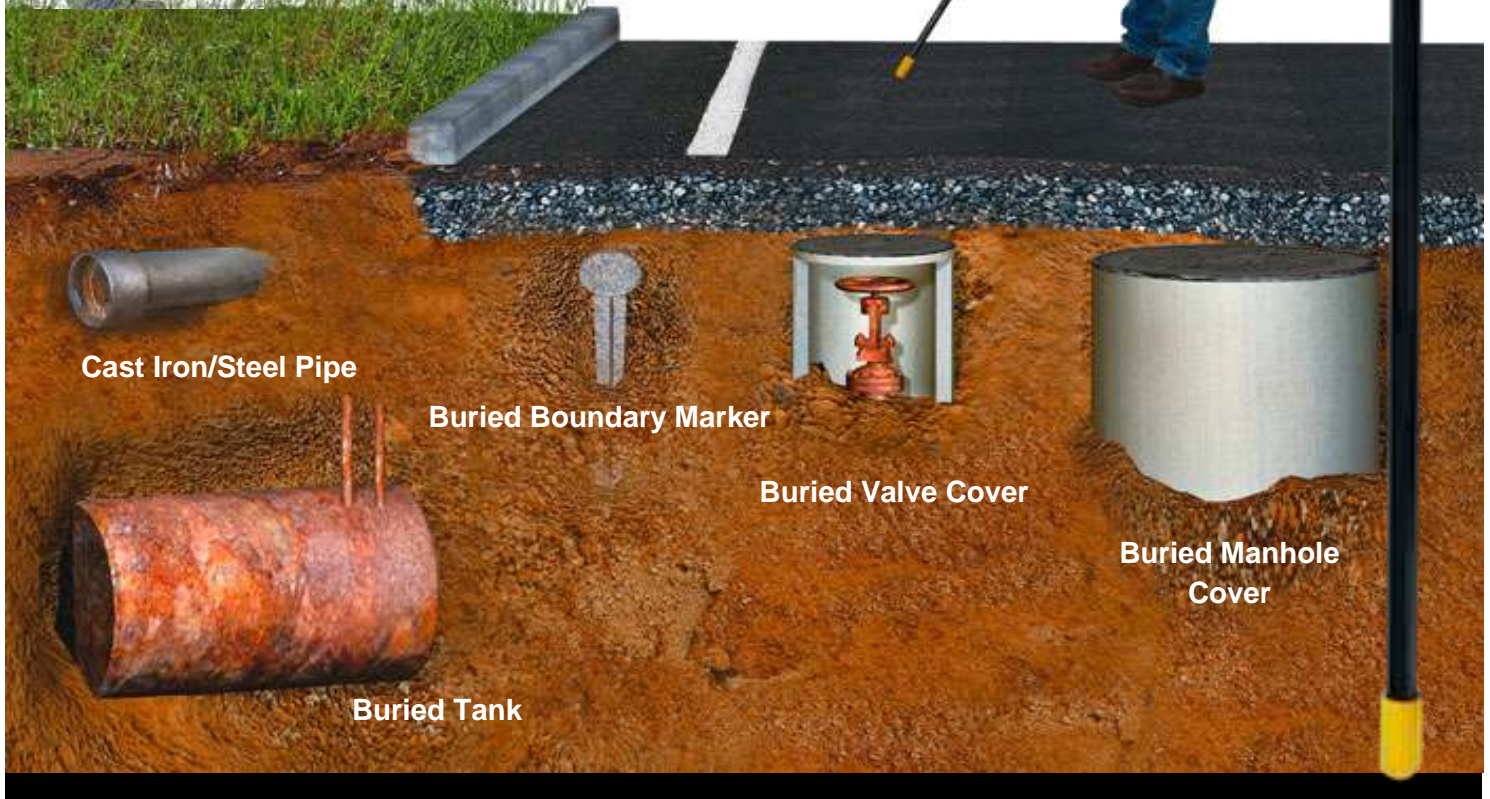
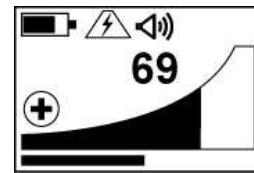
VM-880



Ferrous Metal Detector

The VM-880 is the latest generation of the ever popular 880 ferrous metal locator. Enhancing existing features and adding new, it incorporates the following to enable fast location of buried or hidden assets:

- ▶ Excellent sensitivity
- ▶ Lightweight, just 1.54lbs (0.7kg)
- ▶ Improved ergonomics for comfort during prolonged usage
- ▶ Up to 26 hrs battery life from just 2 x AA (LR6) cells
- ▶ Ultra strong, submersible carbon fiber antenna tube
- ▶ Dot matrix LCD with backlight
- ▶ Audio and visual signal strength indicators
- ▶ Field polarity indicator
- ▶ Continuous battery level indication
- ▶ One touch auto sensitivity control with manual incremental control
- ▶ 50/60Hz proximity warning
- ▶ Unique screen inversion feature to aid pinpointing
- ▶ Soft carry bag supplied as standard



Cast Iron/Steel Pipe

Buried Boundary Marker

Buried Valve Cover

Buried Manhole Cover

Buried Tank

Technical Information

Product and Application

Product	VM-880 Ferrous Metal Detector
Typical Application	Locating & pinpointing buried ferrous objects

Construction

Construction	High impact thermoplastic (ABS) injection moulded housing Carbon fibre reinforced antenna tube	
Weight	1.54lbs (0.7kg)	
Dimensions	43in(L) x 2.5in(W) x 2.6in(H) (1090mm x 88mm x 67mm)	
Speaker	Piezo	
Antennas	Dual Magnetometers	
Batteries	2 x AA (LR6) Alkaline batteries (Battery life, typically 26hrs at 70°F (21°C))	
Controls	Push button keypad (on/off/volume, sensitivity "+" and "-", auto sensitivity)	
External Connections	1 x mini USB (operating systems programming)	
Compliance	Complies with CE (Directive 99/5/EC)	Complies with FCC Rules Part 15
	EN61000-6-4: 2007	CFR 47 part 2: 2004
	EN61000-4-3: 2006	CFR 47 part 15: 2006
	EN61000-4-2: 1995 A1 & A2	ANSI C63.4: 2003
	EN61000-4-8: 1994 A1	
	ETSI EN 300 330-2: 2006	
	ETSI EN 301 489-1: 2005	
	ETSI EN 301 489-3: 2002	

Operation

Information Displayed	Signal level (Response), polarity, battery condition, 50/60Hz warning, sensitivity setting	
Controls Operation	On/off/volume	<ul style="list-style-type: none"> - Short press to turn "on" - Short press to toggle between zero, medium or high volume - Long press to turn off
	Auto Time Off	- Until will shut down if no control button is touched for 15 mins
	Sensitivity Control	<ul style="list-style-type: none"> - "+" increase sensitivity - "-" reduces sensitivity
	Auto Sensitivity	- Centres the sensitivity response on the display, long press to invert screen

Environmental

Temperature Range	Operating	-4°F to 120°F (-20°C to 50°C)
	Storage	-40°F to 140°F (-40°C to 60°C)
Weather Proof	IP54 and Nema 4	
Shipping Weight	4.4lbs (2kg)	
Shipping Dimensions	6.7in x 3in x 47in (170mm x 80mm x 1195mm)	

Warranty

Warranty	12 months
----------	-----------

Accessories

Soft carry bag	Included as standard
User Guide	Included as standard



Typical Locate Capability

(distance are typical and will vary greatly due to varying site condition & material variations)

Small PK Nail
to depth of 6" (15cm)



Large PK Nail
to depth of 10" (25cm)



Marker Stake
to depth of 8ft (2.4m)



Valve Box
to depth of 10ft (3m)



Cast Iron Pipe Joint
to depth of 9ft (2.7m)



Manhole Cover
to depth of 10ft (3m)



5 inch Iron Pipe
to depth of 10ft (3m)



Large Iron Tank
to depth of 16ft (4.8m)











VM-880 Data Sheet V1.2

A. Typical Applications

Item	Parameter
Description	VM-880 Ferrous Metal Detector
Uses	Locating and pinpointing buried ferrous objects

B. Nominal Locating Capability

Typical metal (ferrous or steel) objects are shown here. Depth indications are typically distances. The Depth range depends on mass of the metal and may vary greatly from what is indicated below.

Depth	Ferrous or Steel	Depth	Ferrous or Steel
Small PK Nail Up to 6in (15cm)		Cast Iron Pipe Joint Up to 9ft (2.7m)	
1½ in (4cm) Large PK Nail Up to 10in (25cm)		Manhole Cover Up to 10ft (3m)	
Marker Stake Up to 8ft (2.4m)		5in Iron Pipe Up to 10ft (3m)	
Valve Box Up to 10ft (3m)		Large Iron Tank Up to 16ft (4.8m)	

C. VM-880 Ferrous Metal Detector

Item	Parameter
Construction	- Carbon fibre reinforced antenna tube - High impact thermoplastic (ABS) injection moulded housing
Weight	1.54 lbs (0.7kg)
Dimensions	43in(L) x 2.5in(W) x 2.6(H) (1090mm x 88mm x 67mm)
Piezo Speaker	Tone frequency increases or decreases with gradient field intensity
Receiver Antennas	Dual magnetometers
Batteries	2 x AA (LR6) Alkaline batteries
Battery Life	Alkaline – typically 26 hours continuous use at 70°F (21°C)
Controls	Pushbutton keypad: On/Off/Speaker, sensitivity "+" and "-", auto sensitivity, screen invert
External Connectors	1 x mini USB socket for programming

VM-880 Data Sheet V1.2

Item	Parameter
Compliance/Approvals	<ul style="list-style-type: none"> - Complies with European standard CE (Directive 99/5/EC) <ul style="list-style-type: none"> • EN 55011 • EN 61000-4-2 • EN 61000-4-3 • EN 61000-4-8 - Complies with FCC Rules Part 15 <ul style="list-style-type: none"> • CFR 47 part 15: 2006
Standard Accessories	<ul style="list-style-type: none"> - Soft carry bag - Quick guide

D. Operational

Item	Parameter
Configuration	<ul style="list-style-type: none"> - On/off/speaker <ul style="list-style-type: none"> • Short press to turn on • Short press toggles volume (zero, middle, max) • Long press to turn off - Auto Time Off <ul style="list-style-type: none"> • Unit will shut down if no control button is touched for 15 mins - "+" increases sensitivity - "-" decreases sensitivity - Auto Sensitivity Pushbutton <ul style="list-style-type: none"> • Adjust sensitivity to the centre for given magnetic field • Long press to invert screen

E. Environmental

Item	Parameter
Temperature Range	Operating: 14°F to 120°F (-10°C to 50°C) Storage: -40°F to 140°F (-40°C to 60°C)
Weather Proof	IP54 and NEMA 4
Shipping Weight	4.4lbs (2kg)
Shipping Dimension	47in(L) x 3in(W) x 6.7in(H) (1195mm x 80mm x 170mm)

F. Warranty

Item	Parameter
Warranty	12 months (Limited Warranty)

VM-880 Data Sheet V1.2

G. Features

Item	Parameter
Enhanced Features	<ul style="list-style-type: none"> - Enhanced ergonomic design - Visual and audible output - Field polarity indication - Superior sensitivity over wide temperature range - Rejects non-magnetic objects - Weather resistant - High rejection of power source interference - Lightweight - High-impact construction - Rugged - Compact - 50/60Hz power proximity warning - Screen invert

DISTRIBUTED BY CORROSION CONTROL ENGINEERING
www.cceng.com.au

For more information contact:

Corrosion Control Engineering (NSW) Pty Ltd
 Unit 4/378 Parramatta Road (PO Box 2025)
 HOMEBUSH WEST NSW 2140
 Phone: +61 2 9763 5611 | Fax: +61 2 9763 5644 | Email:
contact@cceng.com.au

Corrosion Control Engineering (VIC) Pty Ltd (Servicing VIC, TAS, SA)
 9J International Square (PO Box 482)
 TULLAMARINE VIC 3043
 Phone: +61 3 9338 4900 | Fax: +61 3 9310 3344 | Email: contactvic@cceng.com

Corrosion Control Engineering (QLD) Pty Ltd (Servicing QLD, NT)
 Unit 2/7 Luke Street LYTTON QLD 4178
 PO Box 330 BULIMBA QLD 4178
 Phone: +61 7 3393 3200 | Fax: +61 7 3393 3199 | Email: reception-qld@cceng.com.au

Corrosion Control Engineering (WA) Pty Ltd
 7/41 Holder Way MALAGA WA 6090
 PO Box 2569 MALAGA WA 6944
 Phone: +61 8 9248 9133 | Fax: +61 8 6210 1120 | Email:
contactwa@cceng.com.au

Corrosion Control Engineering (NZ) Limited (Auckland Office)
 Unit 5A/5 Douglas Alexander Parade (PO Box 300229)
 ALBANY AUCKLAND 0752 NZ
 Phone: +64 9 415 2440 | Fax: +64 9 415 2441
 Email: contact@cceng.co.nz | Web: www.cceng.co.nz

Corrosion Control Engineering (NZ) Limited (New Plymouth Office)
 37 Karamea Street WHALERS GATE NEW PLYMOUTH 4150 NZ
 PO Box 5037 WESTOWN NEW PLYMOUTH 4343 NZ
 Phone/Fax: +64 6 751 4537 | Email: contact@cceng.co.nz | Web:
www.cceng.co.nz